

MR-J3

Servo and Motion Control

Simple, easy, dynamic
Ultimate positioning control

Now available as
400 voltage type



Industry leading performance gives faster production cycles and reduced material wastage



Reduced component size means more flexibility for installation and reduced enclosure sizes



Many built in functions have automatic setup, reducing both installation time and installation mistakes

MR-J3 - Use tomorrow's technology today



Handling systems require exceptional precision and dynamic response.

Mitsubishi Electric servo systems are globally renowned and respected. Offering a perfect combination of high-end performance and ease of use, they are now found in a huge range of applications throughout all branches of industry – from single and multiple axis systems in mechanical engineering and other metal-working sectors to complex, fully-synchronised solutions in the semiconductor and motor industries.

Designed for challenging tasks

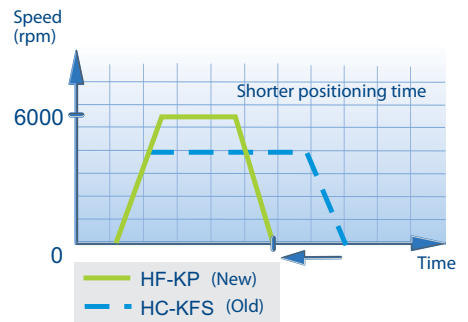
Every detail of the MR-J3 series is designed for performance and reliability, from the intelligent drive electronics to the robust mechanical components. These next-generation servo systems are both compact and flexible, featuring Plug & Play functionality, fibre-optics technology and optical feedback systems.



Plug and palay minimises wiring errors and speeds up installation

Increased response speed

The MR-J3's 900Hz speed-frequency response rate is over 30% faster than existing models. For users this means faster operation, greater precision, faster retooling in production, less wastage and better product quality.



Reduced component size

The reduced component size is critically important to machine designers who are often called upon to squeeze all of the control solutions they need into the smallest deliverable package. The MR-J3 series boasts an intelligent design that has reduced amplifier sizes by up to 40 % and motor lengths by almost a quarter. This means machine designers don't have to make as many compromises to get the right motor and deliver the right power in the right place. These servos' compact dimensions enable flexible installation and economical design, which helps you to keep your costs down and be more competitive in the global economy.

Firmware that delivers performance

All MR-J3 servo amplifiers use the very latest regulation and control technologies. These systems ensure fast installation and setup and make it possible to configure stable systems with very short response times – no matter what your application.

■ Real-time auto-tuning

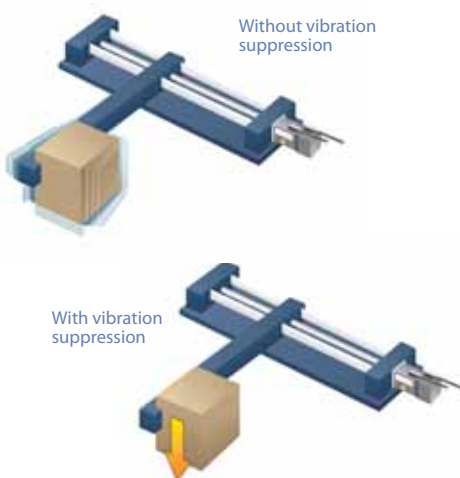
The real-time auto-tuning function sets the servo's control parameters automatically, eliminating the need to calibrate the system for each individual application. But that's not all – auto-tuning also works continuously while the system is in operation, making constant adjustments to cater for applications with fluctuating moments of inertia. This makes it possible to use these servos in a much wider range of applications.

■ Adaptive filtering

Adaptive filters ensure dynamic response and vibration-free operation, even in more demanding applications with suspended loads and high friction coefficients.

■ Advanced suppression of mechanical vibration

The MR-J3 has an automatic feature that enables the amplifier to minimize the effects of a vibrating load. In another first, this innovative function can also suppress vibrations at the end of a tool arm as well as those in the drive train.

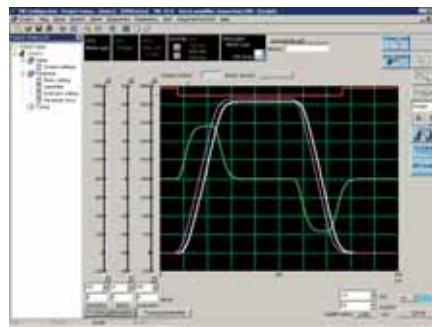


In applications with extreme load vibrations this function significantly improves both performance and system response.

Software that makes your life easier

The MR Configurator software package makes configuration and diagnostics quick and easy and includes powerful graphical machine analysis and simulation functions. Machine analysis enables determination of the frequency response of the connected drive train without any additional instruments. If necessary, you can then make design changes or install filters to achieve better machine performance. The system can be connected to a personal computer with a standard USB (Universal Serial Bus) port.

A wide range of automatic configuration assistants make it easy to set up your new servo systems correctly, even for less experienced users.



Monitoring and checking with the diagnostics features

Advanced features

■ Increased motor speed

MR-J3 motors lead the market, combining speeds of up to 6,000rpm with high torques. This makes it easier for designers to select the motors they need to meet tough performance criteria.

■ Increased encoder resolution

All MR-J3 encoders are 18 bit, delivering an industry-leading 262,144 pulses per revolution. This high resolution makes it possible to detect and suppress mechanical vibrations. The non-volatile absolute encoder system has a backup battery, eliminating the need for time-wasting zero-point calibration routines.

■ Improved motor IP ratings

All MR-J3 motors are IP65 rated as standard (all 400 V motors are IP67). This means that MR-J3 systems can be used in heavy-duty industrial environments.

SSCNET III – The benchmark standard

In addition to conventional pulse train positioning, the MR-J3 series also supports the SSCNET III high-speed motion control network. SSCNET III guarantees data transfer rates of 50Mbit/s and a bus cycle period of just 0.44ms. It is a fully-optical network using fibre-optics cabling for maximum performance, precision, reliability and resistance to interference. It is also a Plug & Play system that reduces both wiring overheads and configuration errors.



Flexible control solutions

Today, the MR-J3 series and SSCNET III support a very broad spectrum of applications with between 2 and 96 axes. You can combine the components with a variety of different PLC and positioning systems for a modular and fully-scalable configuration. This gives you full control over the system and complete cost transparency, combined with the dependable controller performance of the MELSEC FX series or the MELSEC System Q series with motion controllers.

Specifications ///

Servo amplifier MR-J3-A/B ^①	10A 10B	20A 20B	40A 40B	70A 70B	60A(4) 60B(4)	100A(4) 100B(4)	200A(4) 200B(4)	350A(4) 350B(4)	500A(4) 500B(4)	700A(4) 700B(4)
Performance ^②	0.1 kW	0.2 kW	0.4 kW	0.7 kW	0.6 kW	1 kW	2 kW	3.5 kW	5 kW	7 kW
Power supply	3~ 200 – 230 V AC, 50/60 Hz; 1~ 200 – 230 V AC, 50/60 Hz				3~ 200 – 230 V AC, 50/60 Hz (200 V type without (4)); 3~ 380 – 480 V AC, 50/60 Hz (400 V type with (4))					
Control system	Sinusoidal PWM control / current control system / analog, digital, SSCNET III									
Dynamic brake	Built-in									
Protective functions	Overcurrent shutdown, regeneration overvoltage shutdown, overload shutdown (electronic thermal), servomotor overheat protection, encoder fault protection, regeneration fault protection, undervoltage / sudden power outage protection, excess error protection									
Structure/protection	Self-cooling, open (IP00); from 70A/B (200 V) and 200A4/B4 (400 V) fan-cooling, open (IP00)									
Environment	Ambient temperature: Operation: 0 – 55 °C (no freezing); Storage: -20 – 65 °C (no freezing)									
	Ambient humidity: Operation: 90 % RH max. (no condensation); Storage: 90 % RH max. (no condensation)									
	Others: Elevation: 1000 m or less above sea level; Oscillation: 5.9 m/s (0.6 G) max.									

① A type: standard version, B type: for SSCNET III; (4) = 400 V type ② 11–55 kW types on request

Series (200 V)	Rated speed [U/min]	Rated voltage [V]	Rated out- put capacity [kW]	Type ^③	Feature	Amplifier assignment MR-J3										
						10A 10B	20A 20B	40A 40B	60A 60B	70A 70B	100A 100B	200A 200B	350A 350B	500A 500B	700A 700B	
HF-MP	3000	200	0.1	HF-MP13(B)	Ultra low inertia, small performance	●										
			0.2	HF-MP23(B)			●									
			0.3	HF-MP43(B)				●								
			0.75	HF-MP73(B)					●							
HF-KP	3000	200	0.1	HF-KP13(B)	Low inertia, medium performance	●										
			0.2	HF-KP23(B)			●									
			0.3	HF-KP43(B)				●								
			0.75	HF-KP73(B)					●							
HF-SP	2000	200	0.5	HF-SP52(B)	Medium inertia, medium performance				●							
			1.0	HF-SP102(B)					●							
			1.5	HF-SP152(B)						●						
			2.0	HF-SP202(B)							●					
			3.5	HF-SP352(B)								●				
			5.0	HF-SP502(B)									●			
			7.0	HF-SP702(B)										●		
Series (400 V)						—	—	—	60A4 60B4	—	100A4 100B4	200A4 200B4	350A4 350B4	500A4 500B4	700A4 700B4	
HF-SP	2000	400	0.5	HF-SP524(B)	Medium inertia, medium performance				●							
			1.0	HF-SP1024(B)					●							
			1.5	HF-SP1524(B)						●						
			2.0	HF-SP2024(B)							●					
			3.5	HF-SP3524(B)								●				
			5.0	HF-SP5024(B)									●			
7.0	HF-SP7024(B)									●						

③ (B) = with electromagnetic brake

EUROPEAN BRANCHES

MITSUBISHI ELECTRIC EUROPE B.V. 25, Boulevard des Bouvets F-92741 Nanterre Cedex Tel: +33 (0)1 / 55 68 55 68	FRANCE
MITSUBISHI ELECTRIC EUROPE B.V. Gothaer Straße 8 D-40880 Ratingen Tel: +49 (0)2102 / 486-0	GERMANY
MITSUBISHI ELECTRIC EUROPE B.V. Westgate Business Park, Ballymount IRL-Dublin 24 Tel: +353 (0) 1 / 419 88 00	IRELAND
MITSUBISHI ELECTRIC EUROPE B.V. Viale Colleoni 7 I-20041 Agrate Brianza (MI) Tel: +39 039 / 60 53 1	ITALY
MITSUBISHI ELECTRIC EUROPE B.V. Carretera de Rubí 76-80 E-08190 Sant Cugat del Vallés (Barcelona) Tel: +34 93 / 565 3131	SPAIN
MITSUBISHI ELECTRIC EUROPE B.V. Travelers Lane UK-Hatfield, Herts. AL10 8XB Tel: +44 (0)1707 / 27 61 00	UK

EUROPEAN REPRESENTATIVES

GEVA Wiener Straße 89 AT-2500 Baden Tel: +43 (0)2252 / 85 55 20	AUSTRIA	B:TECH A.S. Na Ostrove 84 CZ - 58001 Havlíčkov Brod Tel: +420 (0)569 / 408 841	CZECH REPUBLIC	MELTRADE Ltd. Fertő utca 14. HU-1107 Budapest Tel: +36 (0)1 / 431-9726	HUNGARY	Koning & Hartman B.V. Haarlerbergweg 21-23 NL-1101 CH Amsterdam Tel: +31 (0)20 / 587 76 00	NETHERLANDS	Electrotechnical Systems Siberia Derbenevskaya st. 11A, Office 69 RU-115114 Moscow Tel: +7 495 / 744 55 54	RUSSIA	Beijer Electronics AB Box 426 SE-20124 Malmö Tel: +46 (0)40 / 35 86 00	SWEDEN
TEHNIKON Oktyabrskaya 16/5, Off. 703-711 BY-220030 Minsk Tel: +375 (0)17 / 210 46 26	BELARUS	B:TECH A.S. Headoffice, U Borové 69 CZ-580 01 Havlíčkov Brod Tel: +420 569 777 777	CZECH REPUBLIC	SHERF MOTION TECHN. Ltd. Rehov Hamerkava 19 IL-58851 Holon Tel: +972 (0)3 / 559 54 62	ISRAEL	Beijer Electronics AS Postboks 487 NO-3002 Drammen Tel: +47 (0)32 / 24 30 00	NORWAY	STC DRIVE TECHNIQUE Poslannikov per. 9, str 1 RU-105005 Moscow Tel: +7 495 / 790 72 10	RUSSIA	ECONOTEC AG Hinterdorfstr. 12 CH-8309 Nürensdorf Tel: +41 (0)44 / 838 48 11	SWITZERLAND
Koning & Hartman B.V. BE-1800 Vilvoorde Tel: +32 (0)17 / 210 46 20	BELGIUM	Beijer Electronics A/S Lautrupvej 1-3 DK-2750 Ballerup Tel: +45 (0)70 / 26 46 46	DENMARK	Kazpromautomatiks Ltd. 2, Scladskaya str. KAZ-470046 Karaganda Tel: +7 3212 / 50 11 50	KAZAKHSTAN	MPL Technology Sp. z o.o. Ul. Krakowska 50 PL-32-083 Balice Tel: +48 (0)12 / 630 47 00	POLAND	Craft Cons. & Engineering d.o.o. Ul. Kraljevska 58 SER-1800 Nis Tel: +381 (0)18 / 292-24-4/5, 523 962	SERBIA	GTS Darulaceze Cad. No. 43 KAT. 2 TR-34384 Okmeydanı-Istanbul Tel: +90 (0)212 / 320 1640	TURKEY
AKHNATON 4 Andrej Ljapchev Blvd. P.b 21 BG-1756 Sofia Tel: +359 (0)2 / 97 44 05 8	BULGARIA	Beijer Electronics Eesti OÜ Pärnu mnt.160i EE-11317 Tallinn Tel: +372 (0)6 / 51 81 40	ESTONIA	Beijer Electronics SIA Vestienas iela 2 LV-1035 Riga Tel: +371 (0)784 / 2280	LATVIA	Sirius Trading & Services Aleea Lacul Morii Nr. 3 RO-060841 Bucuresti, Sector 6 Tel: +48 (0)12 / 430 40 06	ROMANIA	INEA SR d.o.o. Karadjordjeva 12/260 SER-113000 Smederevo Tel: +381 (0)26 / 617 163	SERBIA	CSC AUTOMATION Ltd. 15, M. Raskova St., Fl. 10, Office 1010 UA-02002 Kiev Tel: +380 (0)44 / 494 33 55	UKRAINE
INEA CR d.o.o. Losinjska 4 a HR-10000 Zagreb Tel: +385 (0)1 / 36 940 - 01/ -02/ -03	CROATIA	Beijer Electronics OY Jaakonkatu 2 FIN-01620 Vantaa Tel: +358 (0)207 / 463 500	FINLAND	Beijer Electronics UAB Savanoriu Pr. 187 LT-02300 Vilnius Tel: +370 (0)5 / 232 3101	LITHUANIA	AVTOMATIKA SEVER Lva Tolstogo str. 7, off. 311 RU-197376 St.Petersburg Tel: +7 812 / 718 3238	RUSSIA	CS MTrade Slovensko, s.r.o. Vajanskeho 58 SK - 92101 Piestany Tel: +421 (0)33 / 7742 760	SLOVAKIA	INEA d.o.o. Stegne 11 SI-1000 Ljubljana Tel: +386 (0)1 / 513 8100	SLOVENIA
AutoCont Control Jelinkova 59/3 CZ-721 00 Ostrava Svinov Tel: +420 (0)59 / 5691 150	CZECH REPUBLIC	UTEKO A.B.E.E. S. Mavrogenous Str. GR-18542 Piraeus Tel: +30 211 / 7206 900	GREECE	INTEHSIS srl bld. Traian 23/1 MD-2060 Kishinev Tel: +373 (0)22 / 66 4242	MOLDOVA	CONS'V Promyshlennaya st. 42 RU-198099 St. Petersburg Tel: +7 812 / 325 36 53	RUSSIA	INEA d.o.o. Stegne 11 SI-1000 Ljubljana Tel: +386 (0)1 / 513 8100	SLOVENIA	CBI Ltd. Private Bag 2016 ZA-1600 Isando Tel: +27 (0)11 / 928 2000	SOUTH AFRICA



Mitsubishi Electric Europe B.V. /// FA - European Business Group /// Gothaer Straße 8 /// D-40880 Ratingen /// Germany
Tel.: +49(0)2102-4860 /// Fax: +49(0)2102-4861 120 /// info@mitsubishi-automation.com /// www.mitsubishi-automation.com

Specifications subject to change /// Art. no. 189225-C /// 08.2007

All trademarks and copyrights acknowledged.