

MELSEC L Series

Programmable controllers

Innovative Motion Control Positioning made easy



**IMPROVED
PRODUCTIVITY**

Advanced and wide-range motion control for up to 16 axes

**ENHANCED
CONTROL**

Various control functions available including speed and torque control, synchronisation and cam control

**EASY
SET-UP**

Software with graphical interface for easy parameterisation

**EASY
INSTALLATION**

Simple and smart system installation

Simple Motion – as easy as can be

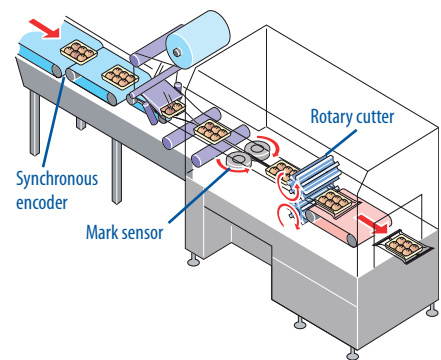


The Simple Motion module is part of the MELSEC L Series which includes a wide range of special modules such as communications, network and I/O modules.

Impressive range of functions

The standard encoder signal interface and high-speed inputs for mark detection, for example, enable the system to be used in classical serial machines such as packaging and bottling lines or palletising systems without fitting additional optional modules. A function for automatically calculating the cam data for a rotary cutter application simply by entering the product length and the synchronisation width is also included.

Various applications such as XY tables and sealing systems can be easily realised using the positioning functions, which include

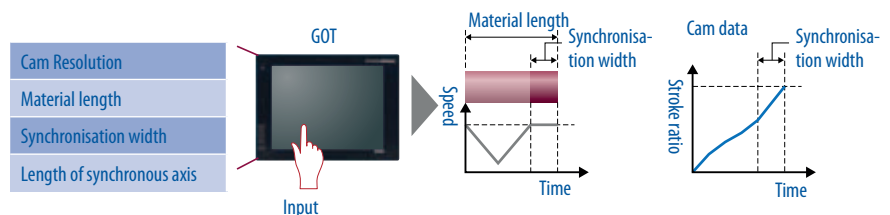


Synchronisation control with synchronous encoder

Motion control for the MELSEC L Series

For the MELSEC L series Mitsubishi Electric offers three different Simple Motion Modules. The 2-, 4- and 16-axis motion modules complement the existing positioning modules and provide the perfect finishing touch to the product range. Various control functions, which have previously been possible only with „pure“ motion controller systems, are provided. These include speed and torque control, synchronisation and cam control. Complex motion control functions can be easily implemented with simple parameterisation and sequence programs using the Simple Motion modules.

linear interpolation (up to four axes), circular interpolation (up to two axes) and path control. Proved and tested programs for the MELSEC Q QD75MH module can be used, since the module LD77MS is compatible with the QD75MH.



Automatic generation of cam data for rotary cutter

Motion made easy

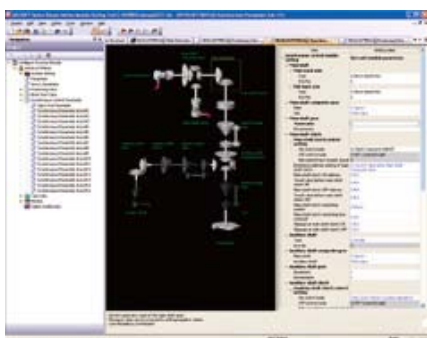
Automatic operation can be easily achieved by entering position addresses, speeds etc. via the sequence program. Powerful additional functions such as M-Code, jump functions, step mode and target address change functions are also available.

Speed and torque control can be used for tension control applications such as winding and unwinding. The control system can be switched between „position control“, „speed and torque control“ and „position control“. This makes it possible to continue to maintain a position with absolute position coordinates even after the control system has been switched over.

Synchronisation and cam functions can be combined in one system when synchronised control is required.

Simple programming

The motion modules are programmed with the established GX Works2 IEC 61131 software package using standardised PLCopen® function modules. All data can be easily generated by means of special auxiliary functions such as automatic speed calculation, off-line simulation and automatic calculation of auxiliary arcs



Easy synchronous control parameter Settings



Structure of a system configuration comprising servo amplifiers and servo motors together with an MELSEC L Series PLC-CPU.

Programming and debugging can be easily carried out from your desk using a PC. All you need is the LD77MS, an MELSEC L Series CPU module and a power supply module. Neither the servo motors nor the servo amplifiers need to be connected for programming and testing. This considerably increases efficiency during setup and fault finding.

High-speed network

The SSCNETIII/H is a high-speed motion network which has been developed by Mitsubishi Electric based on optical communication. It enables full-duplex communication with transmission speeds of up to 150 MB/s with SSCNETIII/H and a guaranteed bus cycle time of 0.44 ms.

The use of fibre optic cables makes communication fully resistant to electrical interference. SSCNETIII/H users therefore benefit in the form of greater reliability and more flexibility, as the fibre optic cables can be laid anywhere - even next to powerful electric motors.

Mitsubishi Electric servo amplifiers which are compatible with SSCNETIII can be combined in one system and support various servo motors for a wide range of applications.

The MELSEC L Series



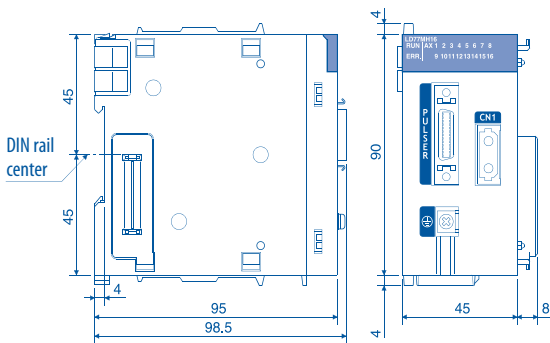
The compact modular MELSEC L Series

The Simple Motion modules are the latest additions to the MELSEC L Series. The MELSEC L Series includes many other modules such as communications and network modules as well as digital and analogue I/O modules. All CPUs have 24 I/O as standard and can implement many special functions, thus avoiding costs for additional special modules. With its compact design, the new MELSEC L Series simple motion module has all the essential features to ensure maximum system flexibility.

Specifications

Specifications		LD77MS2	LD77MS4	LD77MS16
Number of controllable axes		2	4	16
Interpolation functions		Linear interpolation for up to 4 axes, circular interpolation for 2 axes		
Output type		SSCNETIII/H		
Output signal		Bus		
Servo amplifier		MR-J4-B servo amplifier range (over SSCNETIII/H)		
Operation cycle		0.88 ms		0.88 ms/1.7 ms
Positioning	Method	PTP (Point To Point) control, path control (linear and arc), speed control, speed-position switching control, position-speed switching control, torque control		
	Acceleration/deceleration control	Trapezoidal acceleration/deceleration, S-curve acceleration/deceleration		
	Compensation	Backlash compensation, Electronic gear, Near pass function		
	OPR control	5 different methods		
Number of positioning points		600 per axis (Can be set with GX Works2 or PLC program)		
External input signals	Encoder	1 Encoder A/B phases		
	High-speed inputs	2 inputs	4 digital inputs	
Cam function	Storage area cam data	256 kBytes		
	Number of cams	Max. 256 (depending on resolution)		
	Resolution per cycle	256, 512, 1024, 2048, 4096, 8192, 16384, 32768		
	Stroke resolution	2 to 16284		

Dimensions



All dimensions in mm

European Offices

Mitsubishi Electric Europe B.V. Gothaer Straße 8 D-40880 Ratingen Phone: +49 (0)2102 / 486-0	Germany	Mitsubishi Electric Europe B.V. 52, bld. 3 Kosmodamianskaya nab 8 floor RU-115054 Moscow Phone: +7 495 / 721 2070	Russia
Mitsubishi Electric Europe B.V. Radlická 751/13e Avenir Business Park CZ-158 00 Praha 5 Phone: +420 251 551 470	Czech Rep.	Mitsubishi Electric Europe B.V. Carretera de Rubí 76-80 Apdo. 420 E-08190 Sant Cugat del Valles (Barcelona) Phone: +34 (0) 93 / 5653131	Spain
Mitsubishi Electric Europe B.V. 25, Boulevard des Bouvets F-92741 Nanterre Cedex Phone: +33 (0)1 / 55 68 55 68	France	Mitsubishi Electric Europe B.V. (Scandinavia) Fjellvegøen 8 SE-22736 Lund Phone: +46 (0) 8 625 10 00	Sweden
Mitsubishi Electric Europe B.V. Viale Collei 7 Palazzo Sirio I-20864 Agrate Brianza (MB) Phone: +39 039 / 60 53 1	Italy	Mitsubishi Electric Turkey Elektrik Ürünleri A.Ş. Şerifali Mahallesi Nutuk Sokak No:5 TR-34775 Ümraniye-İSTANBUL Phone: +90 (0)216 / 526 39 90	Turkey
Mitsubishi Electric Europe B.V. Westgate Business Park, Ballymount IRL-Dublin 24 Phone: +353 (0)1 4198800	Ireland	Mitsubishi Electric Europe B.V. Travellers Lane UK-Hatfield, Herts. AL10 8XB Phone: +44 (0)1707 / 28 87 80	UK
Mitsubishi Electric Europe B.V. ul. Krakowska 50 PL-32-083 Balice Phone: +48 (0) 12 630 47 00	Poland	Mitsubishi Electric Europe B.V. Dubai Silicon Oasis United Arab Emirates - Dubai Phone: +971 4 3724716	UAE

Representatives

GEVA Wiener Straße 89 A-2500 Baden Phone: +43 (0)2252 / 85 55 20	Austria	Beijer Electronics A/S Lykkegardsvej 17 DK-4000 Roskilde Phone: +45 (0)46 / 75 76 66	Denmark	Beijer Electronics SIA Rītausmas iela 23 LV-1058 Rīga Phone: +371 (0)6 / 784 2280	Latvia	Sirius Trading & Services Aleea Lacul Morii Nr. 3 RO-060841 Bucuresti, Sector 6 Phone: +40 (0)21 / 430 40 06	Romania	I.C. SYSTEMS Ltd. 23 Al-Saad-Al-Alee St. EG-Sarayut, Maadi, Cairo Phone: +20 (0) 2 / 235 98 548	Egypt
OOO TECHNIKON Prospect Nezavisimosti 177-9 BY-220125 Minsk Phone: +375 (0)17 / 393 1177	Belarus	HANS FOLSGAARD A/S Theligaards Torv 1 DK-4600 Køge Phone: +45 4320 8600	Denmark	Beijer Electronics UAB Goštautu q. 3 LT-48324 Kaunas Phone: +370 37 262707	Lithuania	INEA SR d.o.o. Ul. Karadordjeva 12/217 SER-11300 Smederevo Phone: +381 (0)64 / 68 55 187	Serbia	ILAN & GAVISH Ltd. 24 Shenkar St., Kiryat Arie IL-49001 Petah-Tikva Phone: +972 (0)3 / 922 18 24	Israel
ESCO DRIVES Culliganlaan 3 BE-1831 Diegem Phone: +32 (0)2 / 717 64 60	Belgium	Beijer Electronics Eesti OÜ Pärnu mnt.160i EE-11317 Tallinn Phone: +372 (0)6 / 51 81 40	Estonia	ALFATRADE Ltd. 99, Paola Hill Malta-Paola PLA 1702 Phone: +356 (0)21 / 697 816	Malta	SIMAP SK Jána Derku 1671 SK-911 01 Trenčín Phone: +421 (0)32 743 0472	Slovakia	GIRIT CELADON Ltd. 12 H'aomanut Street IL-42505 Netanya Phone: +972 (0)9 / 863 39 80	Israel
KONING & HARTMAN B.V. Woluvelaan 31 BE-1800 Wilvoorde Phone: +32 (0)2 / 257 02 40	Belgium	Beijer Electronics OY Vanha Nurmiinjärventie 62 FIN-01670 Vantaa Phone: +358 (0)207 / 463 500	Finland	INTEHISIS SRL bld. Traian 23/1 MD-2060 Kishinev Phone: +373 (0)22 / 66 4242	Moldova	INEA RBT d.o.o. Stegne 11 SI-1000 Ljubljana Phone: +386 (0)1 / 513 8116	Slovenia	CEG LIBAN Cebaco Center/Block A Autostrade DORA Lebanon-Beirut Phone: +961 (0)1 / 240 445	Lebanon
INEA RBT d.o.o. Stegne 11 SI-1000 Ljubljana Phone: +386 (0)1 / 513 8116	Bosnia and Herzeg.	PROVENDOR OY Teljänkatu 8 A3 FIN-28130 Pori Phone: +358 (0)2 / 522 3300	Finland	HIFLEX AUTOM. B.V. Wolwevestaat 22 NL-2984 CD Ridderkerk Phone: +31 (0)180 / 46 60 04	Netherlands	Beijer Electronics Automation AB Box 426 SE-20124 Malmö Phone: +46 (0)40 / 35 86 00	Sweden	ADROIT TECHNOLOGIES 20 Waterford Office Park 189 Wickopen Road ZA-Fourways Phone: +27 (0)11 / 658 8100	South Africa
AKHNATON 4, Andrei Lipachev Blvd., PO Box 21 BG-1756 Sofia Phone: +359 (0)2 / 817 6000	Bulgaria	UTECO A.B.E.E. 5, Mavrogenous Str. GR-18542 Piraeus Phone: +30 (0)211 / 1206-900	Greece	KONING & HARTMAN B.V. Haarlerbergweg 21-23 NL-1101 CH Amsterdam Phone: +31 (0)20 / 587 76 00	Netherlands	OMNI RAY AG Im Schörlis CH-8600 Dübendorf Phone: +41 (0)44 / 802 28 80	Switzerland		
INEA CR Losinjka 4 a HR-10000 Zagreb Phone: +385 (0)1 / 36 940 -01/-02/-03	Croatia	MELTRADE Kft. Vertis utca 14, HU-1107 Budapest Phone: +36 (0)1 / 431-9726	Hungary	Beijer Electronics AS Postboks 487 NO-3002 Drammen Phone: +47 (0)32 / 24 30 00	Norway	OOO "CSC-AUTOMATION" 4-B, M. Raskovoyi St. UA-02660 Kiev Phone: +380 (0)44 / 494 33 44	Ukraine		
KafoCont C.S. S.R.O. Kafkova 1853/3 CZ-702 00 Ostrava 2 Phone: +420 595 691 150	Czech Republic	TOO Kazpromavtomatika Ul. Zhambyla 28 KAZ-100017 Karaganda Phone: +7 7212 / 50 10 00	Kazakhstan	Fonseca S.A. R. João Francisco do Casal 87/89 PT-3801-997 Aveiro, Esigueira Phone: +351 (0)234 / 303 900	Portugal				



Mitsubishi Electric Europe B.V. / FA - European Business Group / Gothaer Straße 8 / D-40880 Ratingen / Germany / Tel.: +49(0)2102-4860 / Fax: +49(0)2102-4861120 / info@mitsubishi-automation.com / https://eu3a.Mitsubishielectric.com

Art. no. 253267-B / 11.2013 / Specifications subject to change / All trademarks and copyrights acknowledged.

